

**Proposal for North Carolina Department of Environment
and Natural Resources
Division of Water Resources
Water Resources Development Project Grant**

**Feasibility Study for Stream Restoration and Recreation
on Cane Creek**

Bakersville, North Carolina

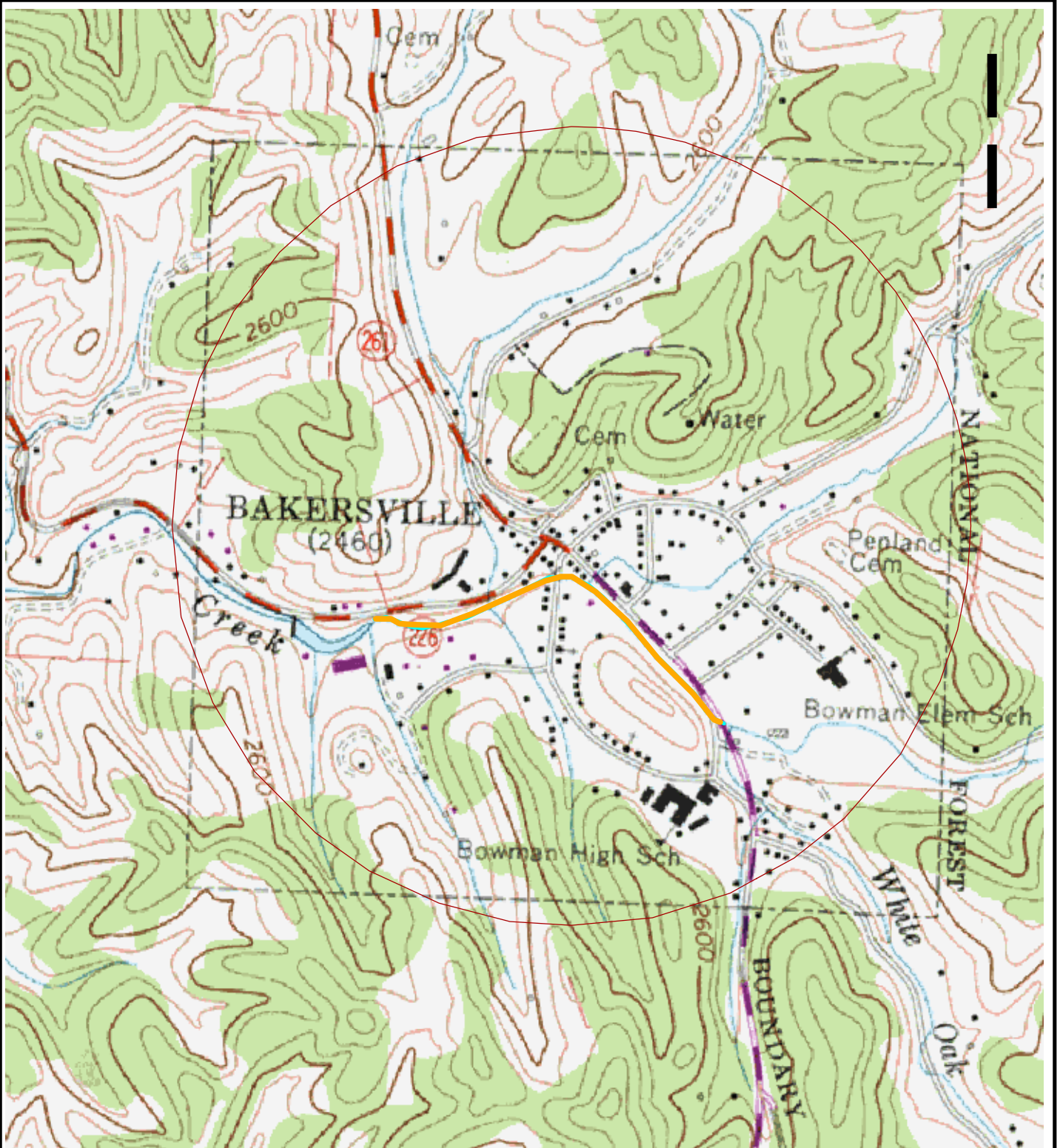
June 30, 2008

Submitted by:



Mitchell County Soil and Water Conservation District

ATTACHMENT 2

FIGURES AND PHOTOGRAPHS

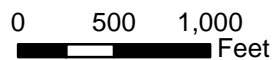


Legend

-  Municipal Boundary
-  Approximate Project Reach

DATA SOURCES:
 Hydrology: NC OneMap
 Roads: NC DOT
 Municipal Boundary: NC DOT
 Topography: USGS created 1960; revised 1978
 Cities and Towns: ESRI

Scale

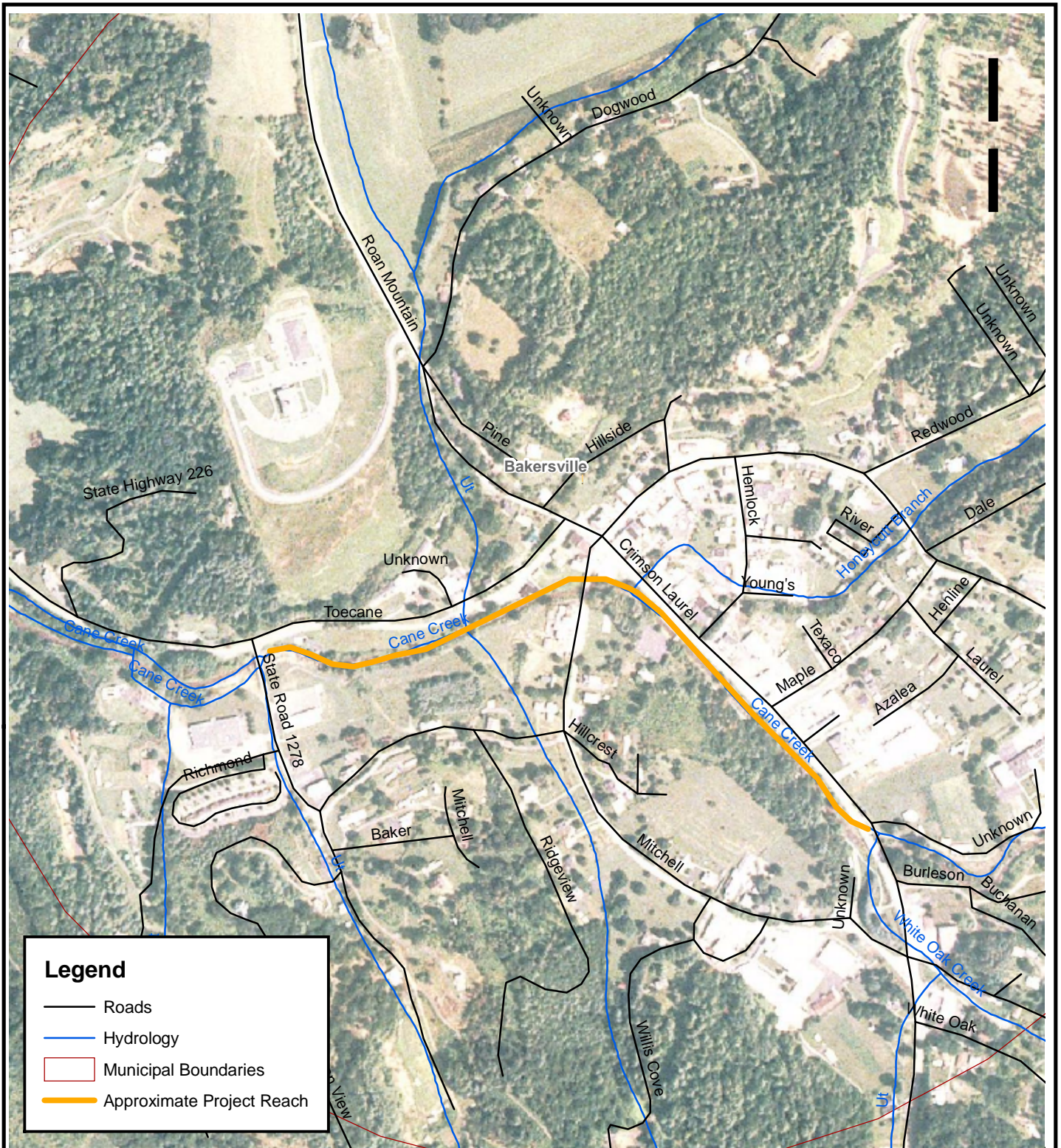


VICINITY MAP

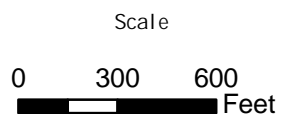
CANE CREEK CREEKWALK
 MITCHELL COUNTY
 BAKERSVILLE, NORTH CAROLINA

Figure

1



DATA SOURCES:
 Hydrology: NC OneMap
 Roads: NC DOT
 Municipal Boundary: NC DOT
 Topography: USGS created 1960; revised 1978
 Cities and Towns: ESRI



LOCATION MAP

CANE CREEK CREEKWALK
 MITCHELL COUNTY
 BAKERSVILLE, NORTH CAROLINA

Figure

2



Photograph 1 – Representative view of Cane Creek and walking trail, looking upstream.



Photograph 2 – Representative view showing limited access to Cane Creek, poor riparian vegetation, and over-steepened bank.